

My Duties as a Senior Club Member

- 1) Be cheery and positive. Greet other golfers with a smile.
- 2) Thank others for the work they do and compliment them for things they do well.
- 3) Be on the tee for your tee time! Keep up with the group in front of you! Repair ball marks and divots. ***This is your golf course.***
- 4) **Know your senior club schedule. Put it on your refrigerator and/or your calendar.**
- 5) When signing up for a tournament make sure you have your entry fee and place it in the envelope provided; either in the restaurant on tournament day, or in the pro shop drawer.
Use the same # next to the names of the players you wish to play with (usually the 1st to register), unless event is an ABCD.
- 7) Welcome new players to play in your group.
- 8) Play by USGA rules. **No gimmies** - putt everything out.
- 9) After tournaments if John Patterson is not around, place your score card in the Pro Shop drawer.
- 10) **ALL** your scores at Stanley must be recorded on the score sheet provided in the senior club alcove.

Club Executive Board

President

Mike Coletta

Vice President

Paul Wiehn

Treasurer

Jim Brennan

Secretary

Bob Prentis

Tournament Chairman

John Patterson - (860) 829-2025
seniorclubatstanley@gmail.com

Handicap Chairman

Roger Helal

Club Advisors

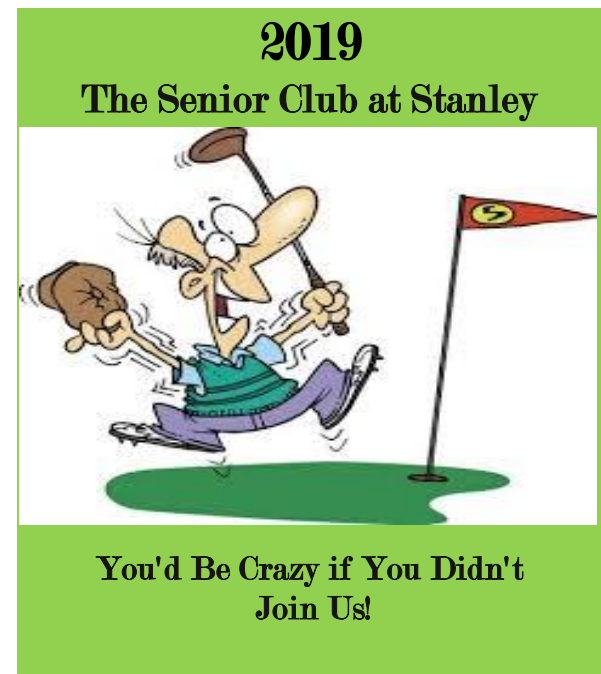
Ed Zieger & Dave Bishop

Please Note:

The new payee for all checks sent to the club is:

The Senior Club at Stanley G. C.

Mail, with the completed application, to Jim Brennan at 167 Karen Lee Rd, Glastonbury 06033. Application and dues can also be left in the Pro Shop or submitted at the annual Kick Off Meeting.



Benefits!

Senior Coffee at The Back 9 Tavern - \$1.00!

Senior Bucket of Balls - \$3!

Receive 10% off food at restaurant with card

Dues only \$35 (cheap)!

Coffee & Danish after all Tournaments - even if you didn't play!

Competition, Enjoyment, Fun, Unusual Stories and Laughter!

5 nine hole scores gets you a handicap to use at Stanley GC!

Optional GHIN handicap good at all courses worldwide for \$26!

2019 Events

- Apr 3 Kickoff Meeting @ The Back Nine Tavern
Hours are 4 - 6 pm!
Please bring a gift or two for the raffle.
- Apr 17 The Dave Bishop 4 man ABCD Scramble
Pairings based on handicap!
- May 8 President's Cup at Timberlin
Stroke Play This Year!
- May 22 Jack Morris Memorial - Gross and Net
Optional Steal the Old Man's Bundle
- Jun 12 President's Cup at Stanley
Last year was a tie! Again!!
- Jun 26 2 man Trifecta
Scramble; Better Ball; Alternate Shot
- Jul 10 Great Balls of Fire - Gross and Net
With ABCD Hot Ball
- July 24 2 Man Stableford
**Combined Points!
Real Stableford, no Quota**
- Aug 7 4 Man ABCD Carolina Progressive
1 score on the 5's, 2 on the 4's, 3 on the 3's!
- Aug 21 2 Man Shamble
Minimum 3 Drives!
- Sep 11 Gross & Net Sandwich
Individual scores and food!
- Sep 25 Club Championship
Tournament and free picnic

News You Can Use!

BIG Changes to the Rules of Golf!!

The time to find a lost ball is now **3** minutes

Dropping the ball will be from knee height.

If your ball is moved accidentally, for any reason, put it back with no penalty.

No penalty if the ball accidentally hits you or your equipment. Play it as it lies.

You get relief from an embedded ball everywhere except bunkers.

No penalty for a putt hitting the flagstick.

You may repair ANY damage to the putting green.

You may touch the line of your putt as long as it doesn't improve the conditions.

Water hazards will now be "penalty areas".

You will be allowed to move loose impediments in penalty areas and bunkers.

If you accidentally hit the ball twice during a stroke there is NO penalty. Play it as it lies.

Let's Talk Handicaps!

It's our handicap that allows us to play other golfers on an equal basis!

It takes at least 5 posted nine hole scores to determine a valid course handicap.

ALL your non-tournament scores at Stanley MUST be posted on the score sheet in the Senior Club alcove. Posting of these scores is CRITICAL for handicap determination.

We have a NEW local rule that the maximum score for any hole played in a tournament is double par.

If you play 18, post each 9 separately.

Please read the supplement in the mailing or on the bulletin board describing how adjusting scores works, and how to post scores!

The USGA has a maximum index of 18.2 for 9 holes.

So, your maximum handicap is 19 on the Blue Course, where most of our play occurs, which has a slope of 117.

The committee will post your scores for tournaments where you play your own ball. There is no need for you to post these.

New members will have a temporary handicap, adjusted based on actual scores, assigned to allow them to play until 5 scores are posted.

You MUST have an established handicap (see above) -or- a valid GHIN index to qualify for prizes in the Club Championship. If you don't meet these qualifications, you can still play, but will only be eligible for skill contest prizes.